

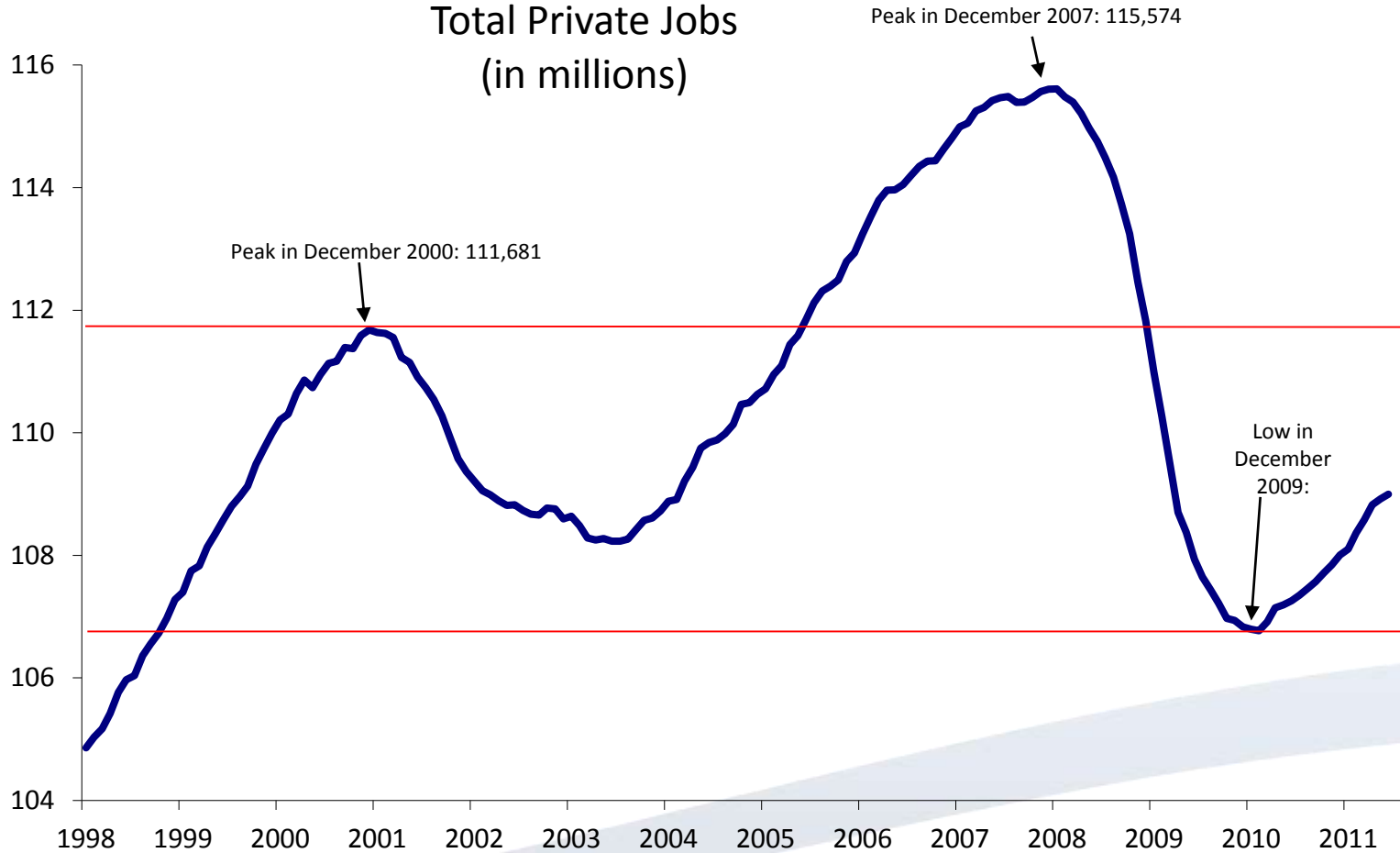
Yes, We Can Create Jobs

The state of the U.S. workforce and the Road to Recovery for the American economy.

Dr. Heather Boushey

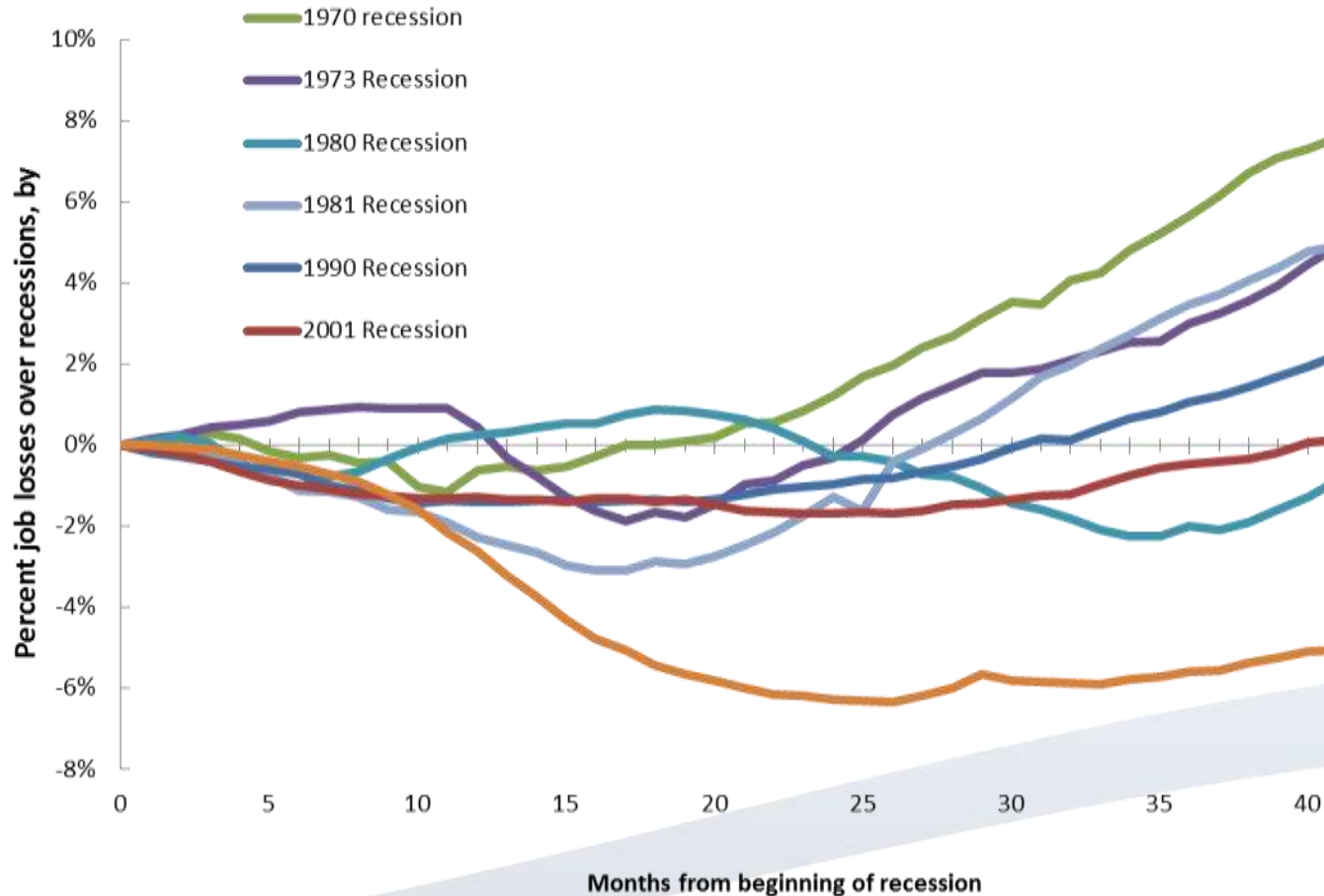
September 21, 2011

The Lost Decade Total Private Jobs (in millions)



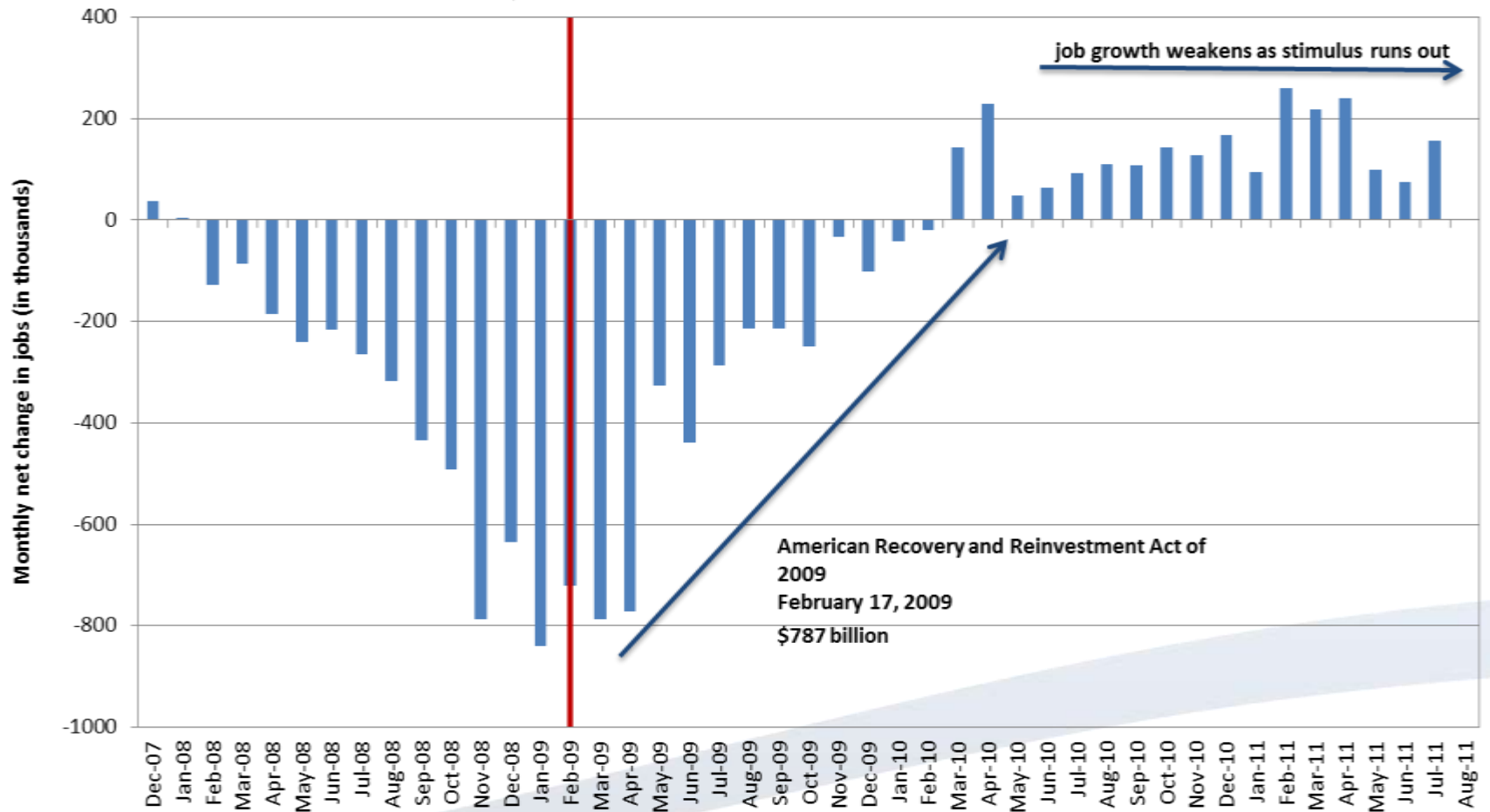
Source: Bureau of Labor Statistics, Establishment Survey.

Workers Have Lost More Jobs Than in Prior Recessions (As a Share of Total Jobs Pre-Recession)



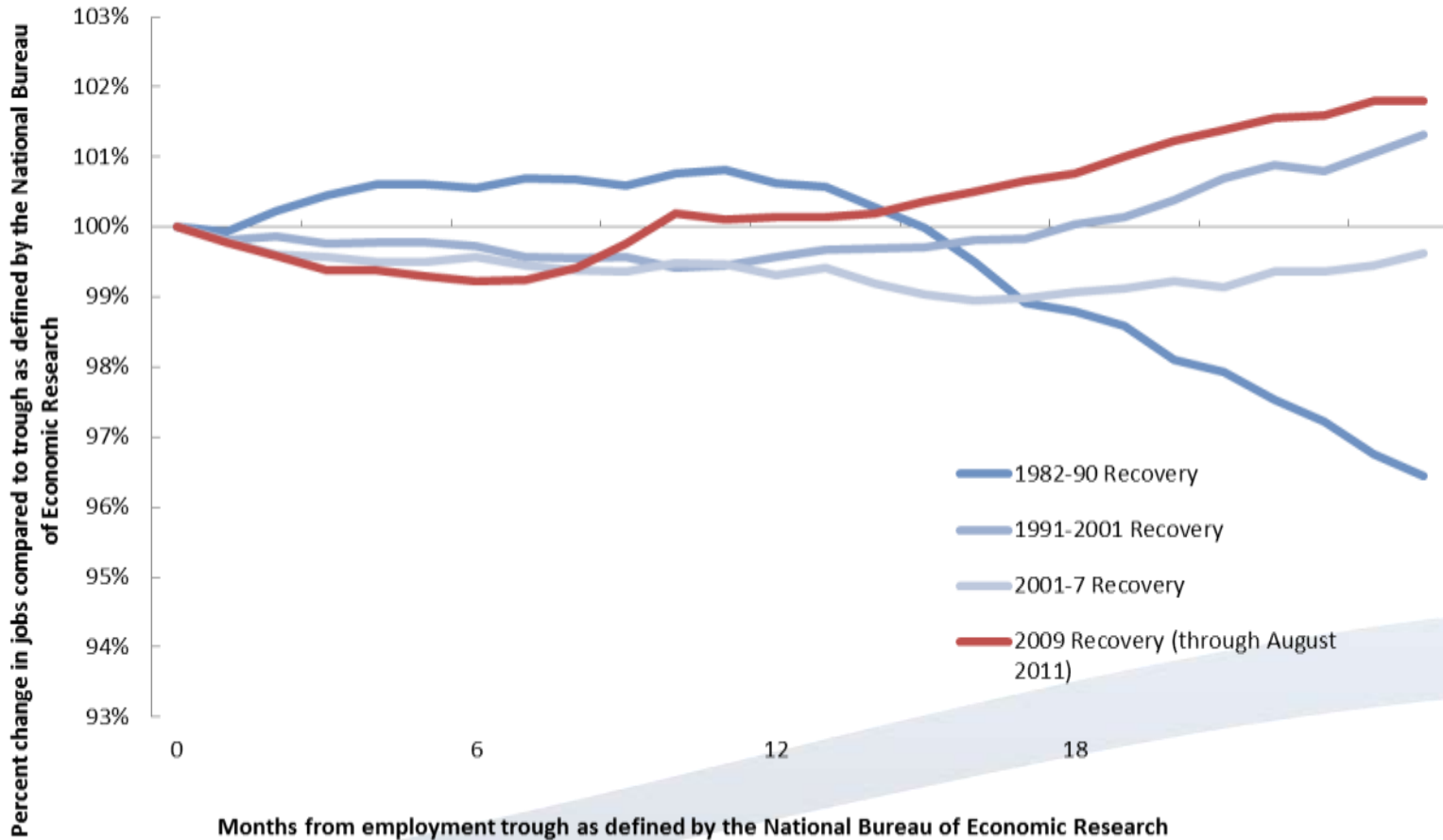
Sources: Bureau of Labor Statistics, Establishment Survey and National Bureau of Economic Research.

Impact of Stimulus Spending on Private Sector Jobs (in Thousands) December 2007 - August 2011



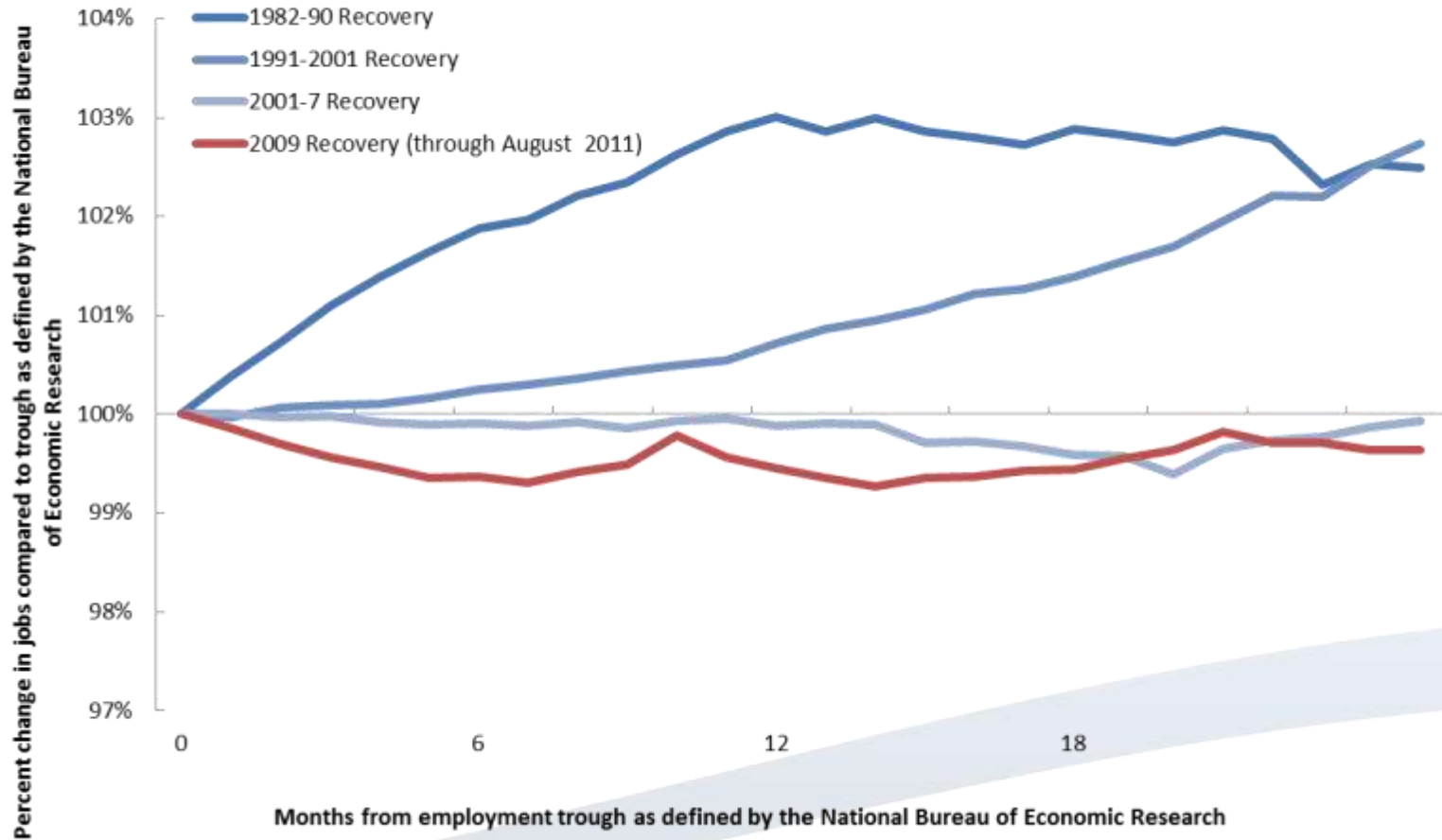
Source: Bureau of Labor Statistics, Current Employment Statistics Survey

Past the two-year mark, for men, job gains in the current recovery outpace prior recoveries



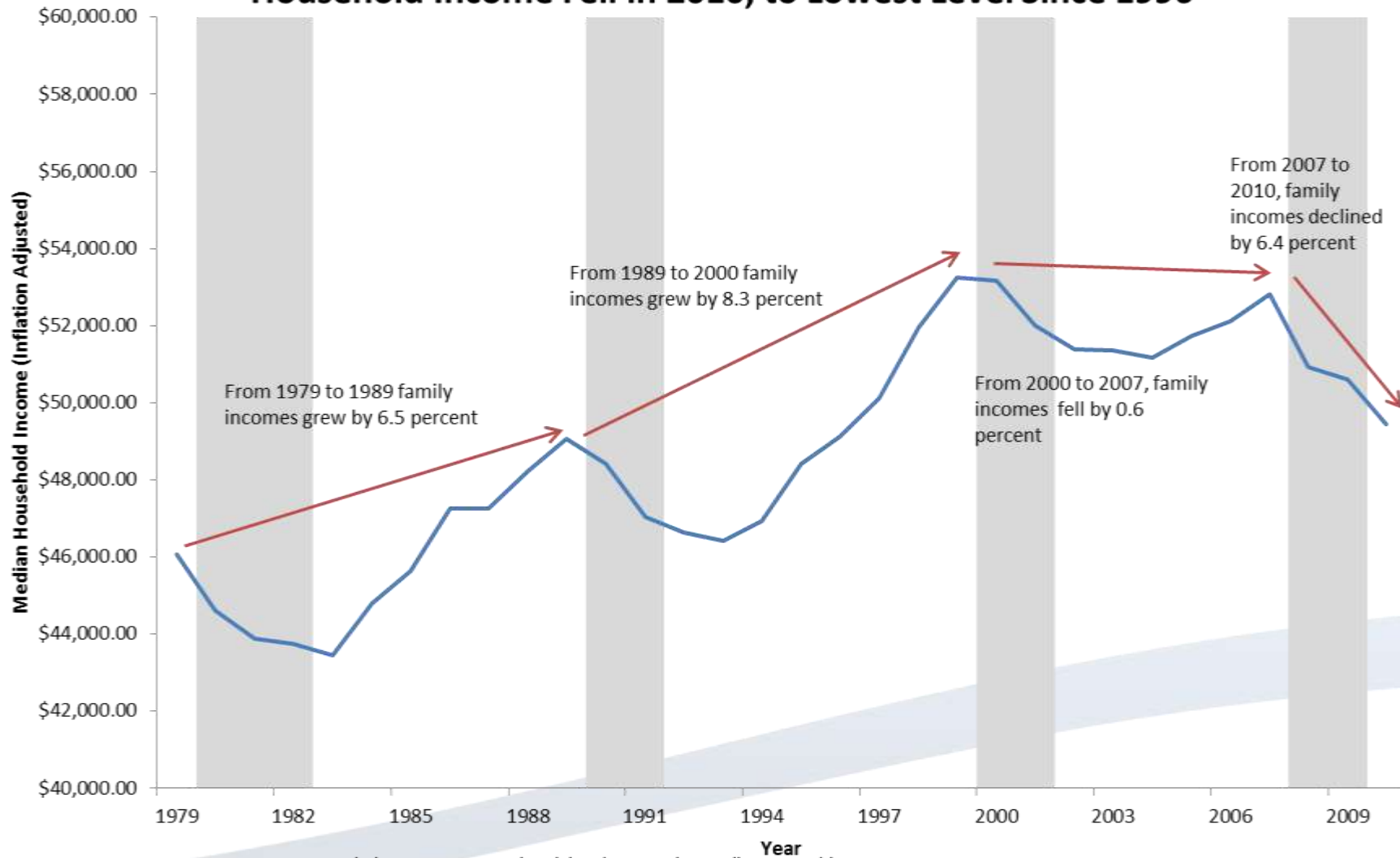
Sources: Bureau of Labor Statistics, Establishment Survey and National Bureau of Economic Research.

Past the two-year mark, for women, job gains in the current recovery are below prior recoveries



Sources: Bureau of Labor Statistics, Establishment Survey and National Bureau of Economic Research.

Household Income Fell in 2010, to Lowest Level Since 1996



Source: U.S. Census Bureau, Current Population Survey, Annual Social and Economic Supplements, Table F6, available at <http://www.census.gov/hhes/www/income/data/historical/families/index.html>

Keeping poverty in check

Government programs keep people out of poverty

The **Earned Income Tax Credit** kept

5.4 million

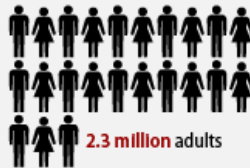
people out of poverty last year



Unemployment Insurance kept

3.2 million

people out of poverty last year



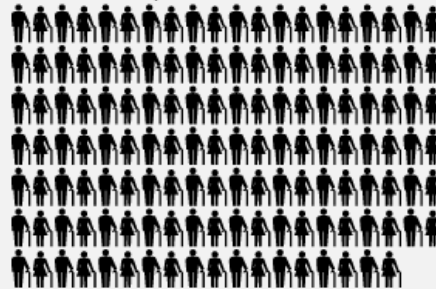
Social Security kept

20.3 million

people out of poverty last year

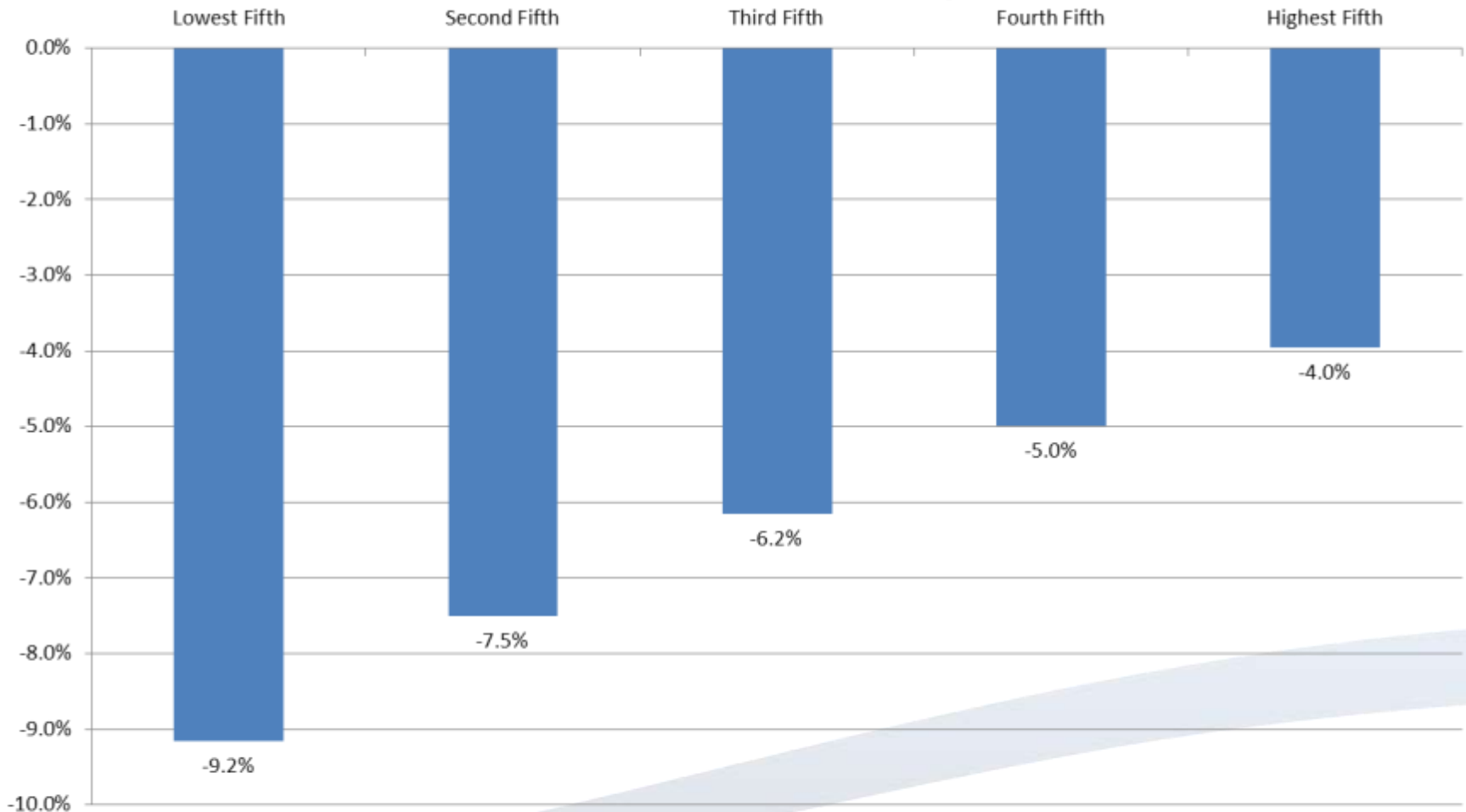


13.8 million elderly



Source: U.S. Census Bureau, Current Population Survey, 2011 Annual Social and Economic Supplement. Unpublished data.

Low Income Households Hit Hard by Recession



Source: U.S. Census Bureau, Current Population Survey, Annual Social and Economic Supplements, Table H3, available at <http://www.census.gov/hhes/www/income/data/historical/househ>